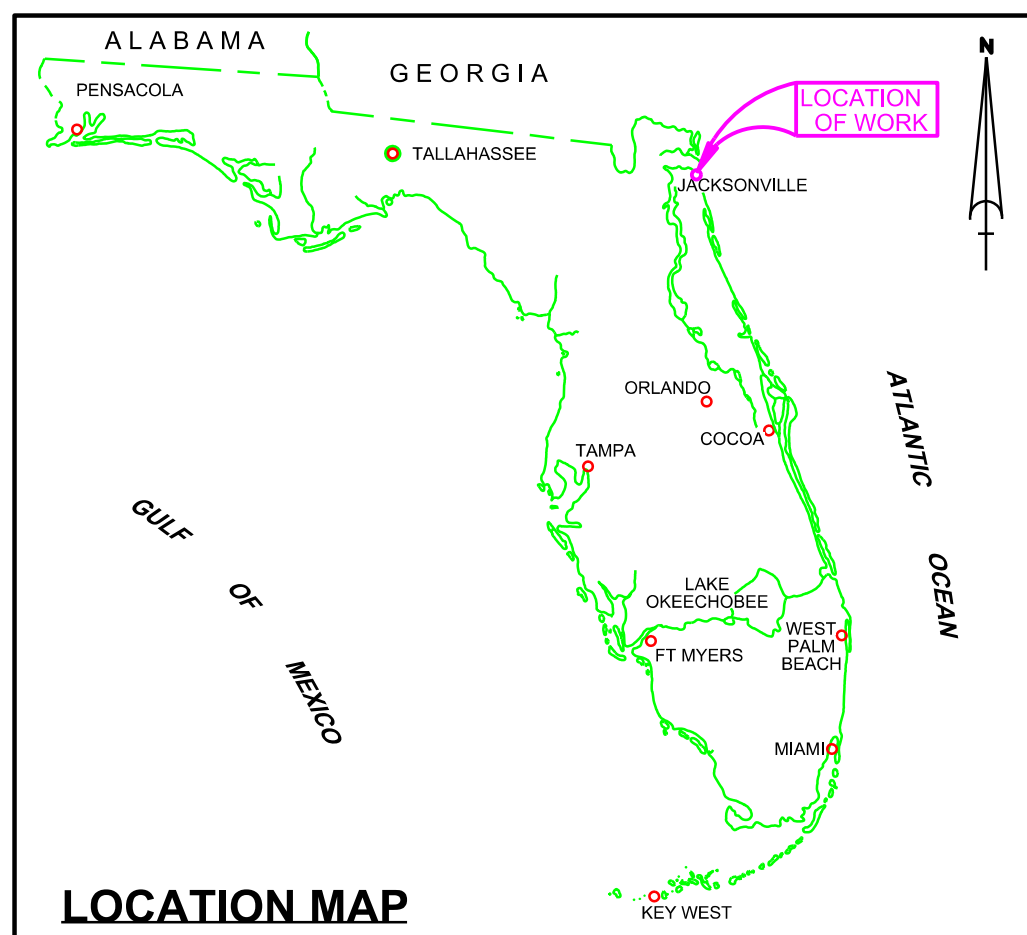


# U.S. NAVAL STATION MAYPORT 1Q HYDROGRAPHIC EXAM SURVEY FY22



SHEET INDEX



| LEGEND |                    |
|--------|--------------------|
| ▲      | MONUMENT           |
| ⚓      | LIGHTED BEACON     |
| ■      | GREEN DAYBEACON    |
| ▲      | RED DAYBEACON      |
| ●      | RED LIGHTED BUOY   |
| ●      | GREEN LIGHTED BUOY |
| ○      | CAN BUOY           |
| ○      | NUN BUOY           |
| ⚓      | TIDE STAFF         |
| 8      | PROJECT DEPTH      |

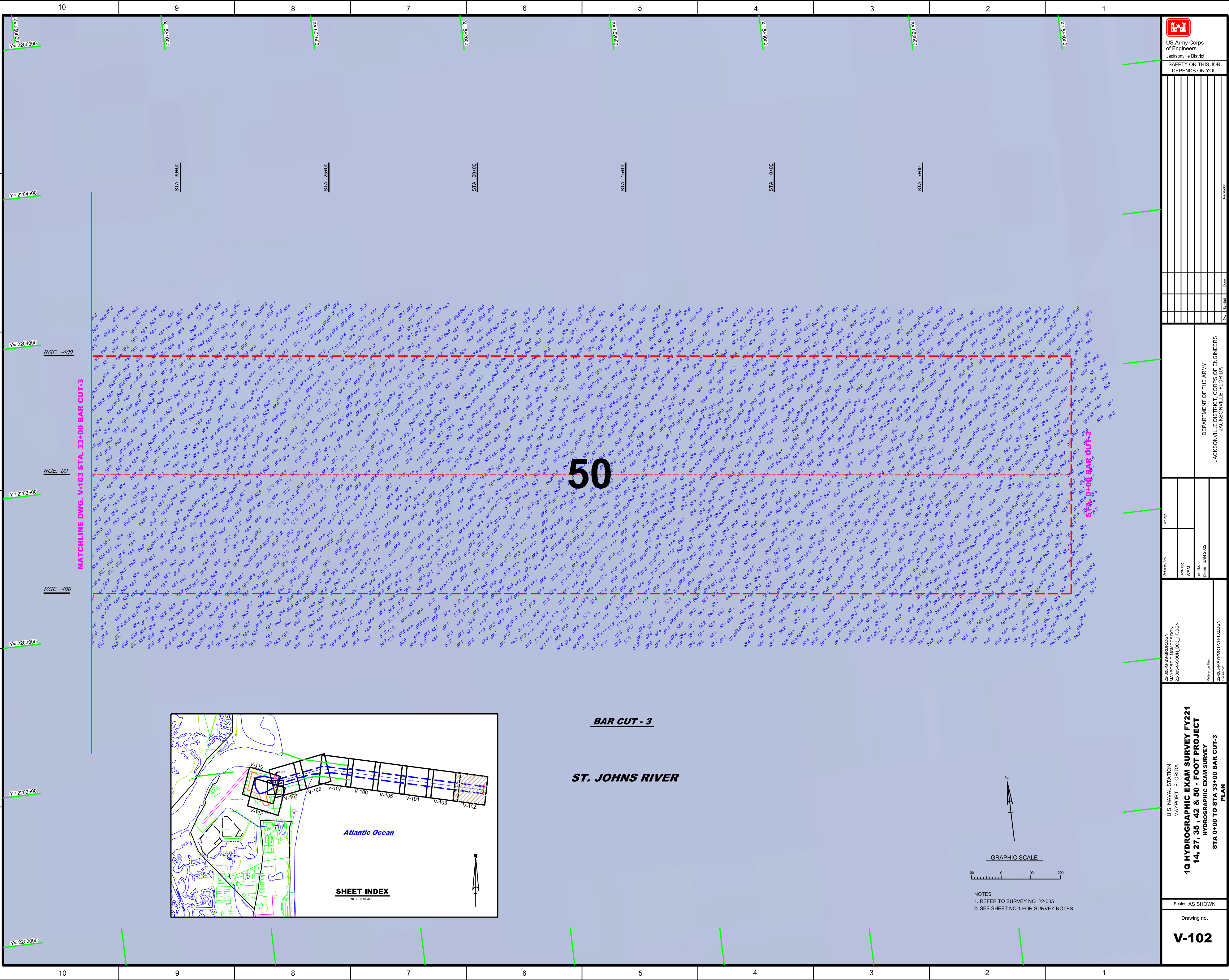
**SURVEY NOTES**

1. REFER TO SURVEY NO. 22-005.
2. DEPTHS DEPICTED BY THIS SURVEY ARE REFERENCED TO MLLW, TIDAL EPOCH 1983-2001 AS REPORTED BY THE NATIONAL OCEANIC AND ATMOSPHERIC ADMINISTRATION (NOAA), NOAA'S VDATUM MODEL, AND PUBLISHED TIDE STATION DATA. WE USED TO GENERATE A HYPACK KINEMATIC TIDE DATUM (KTD) MODEL. THIS KTD MODEL, BEING A COMBINATION OF THOSE TWO SOURCES, CANNOT BE CONSIDERED EQUIVALENT TO THE VDATUM MODEL BECAUSE OF POSSIBLE ADDITIONS OR EDITS THERETO. DO NOT USE VDATUM MODEL IN PLACE OF THE KTD FILE. THE KTD MODEL USED FOR THIS SURVEY IS:  
 \*CAMDENGA-NASSAU-DUVAL-STJOHNS-FLAGLER\_20191202.KTD\*.
3. TIDAL REDUCTIONS WERE OBTAINED UTILIZING A REAL-TIME KINEMATIC (RTK) GPS AND REFERENCED TO MLLW UTILIZING THE KTD FILE REFERENCED ABOVE, AND CALIBRATED TO THE PUBLISHED MLLW HEIGHTS OF THE BENCHMARKS ASSOCIATED WITH THE TIDE GAGE SITE SPECIFIED BELOW:  
 NOAA TIDAL STATION 872-0218, BAR PILOTS DOCK  
 NOAA TIDAL STATION 872-0214, DEGAUSSING STRUCTURE
4. ALL ELEVATIONS ARE BELOW THE CHART DATUM UNLESS PRECEDED BY A (+) SIGN.
5. PLANE COORDINATES ARE BASED ON THE TRANSVERSE MERCATOR PROJECTION FOR THE EAST ZONE OF FLORIDA AND REFERENCED TO NORTH AMERICAN DATUM OF 1983 (NAD83).
6. ALL STATIONING REFERS TO THE CENTERLINE OF THE CHANNEL.
7. THIS SURVEY WAS PERFORMED USING REAL-TIME KINEMATIC (RTK) GPS POSITIONING WITH THE FOLLOWING REFERENCE BASE LOCATION:  
 REFERENCE BASE LOCATED AT "USACE MAYPORT ARP" (OPUS PID: BBG280)
8. VERTICAL MEASUREMENTS WERE MADE USING A R2 SONIC 2024 MULTI-BEAM AND AN ODOM ECHOTRAC E20 OPERATING AT 28/200 KHZ. ALL MULTI-BEAM SOUNDINGS IN THE MEC AND BARCUT-3 ARE IN HIGH FREQUENCY. ALL OTHER SINGLE-BEAM SOUNDINGS IN THE TURNING BASIN, SLIP, SMALL BOAT BASIN AND MEC STA. 53+50 TO 63+42 ARE IN LOW FREQUENCY.

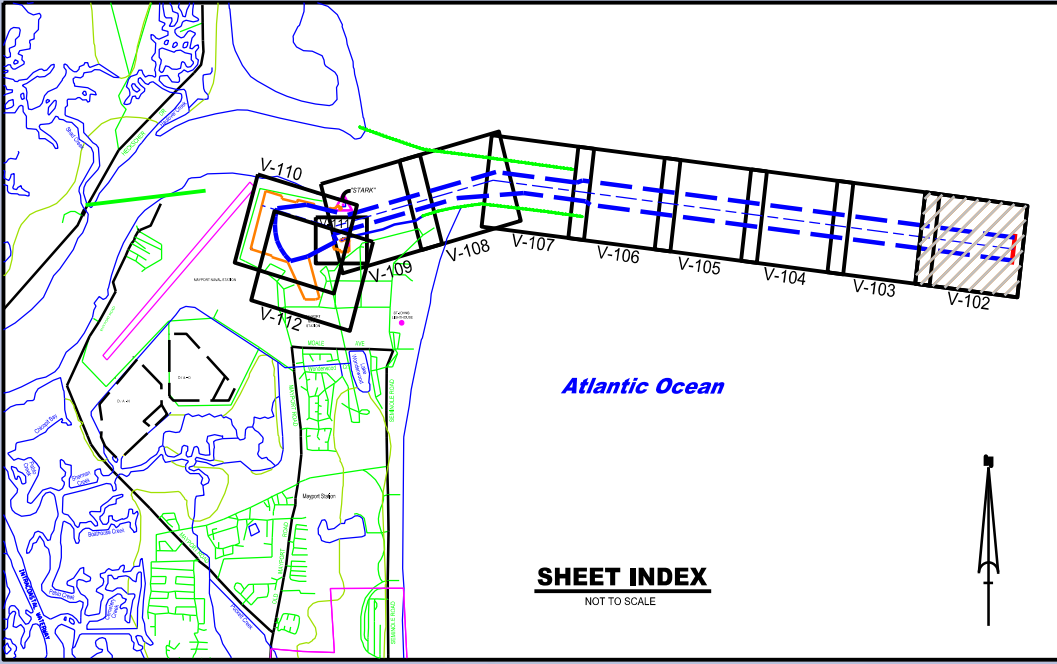
| VESSEL    | DATE OF SURVEY  | CUT   |
|-----------|-----------------|---|
| SV SALZER | 08-09 DEC 2021  | BAR CUT-3                                       |
| SV SALZER | 14, 18 JAN 2022 | ENTRANCE CHANNEL                                |
| SB WELLS  | 13 JAN 2022     | SMALL BOAT BASIN, SLIP, TURNING BASIN, ENT. CH. |

9. AIDS TO NAVIGATION WERE LOCATED DURING THIS SURVEY.
10. THE INFORMATION DEPICTED ON THIS MAP REPRESENTS THE RESULTS OF SURVEYS MADE ON THE DATES INDICATED ABOVE AND CAN ONLY BE CONSIDERED AS INDICATING THE GENERAL CONDITIONS AT THAT TIME. THIS CHART IS SOLELY FOR THE DISTRIBUTION OF AVAILABLE DEPTHS AT THE TIME OF THE SURVEY.
11. SURVEY ACCURACY PERFORMANCE STANDARDS, QUALITY CONTROL, AND QUALITY ASSURANCE REQUIREMENTS WERE FOLLOWED DURING THIS SURVEY IN ACCORDANCE WITH USACE EM 1110-2-1003, HYDROGRAPHIC SURVEYING, 30 NOV 2013 AND EM 1110-2-6506, STANDARDS AND PROCEDURES FOR REFERENCING PROJECT ELEVATION GRADES TO NATIONWIDE VERTICAL DATUMS, 31 DEC 2010.

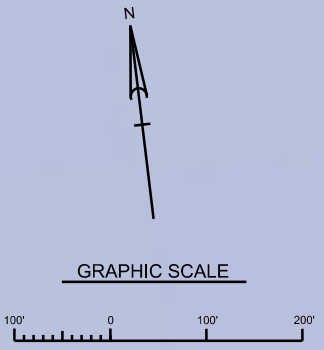
|  |  |  |
|--|--|--|
| 22-005-GIS-BIRD/DGN<br>MAYPORT-CHGNMCCF.DGN<br>22-005-AMAYPORT-VH-101.DGN<br>File Name | 22-005-AMAYPORT-VH-101.DGN<br>File Name  | <b>U.S. NAVAL STATION<br/>MAYPORT, FLORIDA</b><br><br><b>1Q HYDROGRAPHIC EXAM SURVEY FY221</b><br><b>14, 27, 35, 42 &amp; 50 - FOOT PROJECT</b><br><b>HYDROGRAPHIC EXAM SURVEY</b> |
| Drawn by: WRM<br>Checked by: WRM<br>Date: JAN 2022                                     | Department of the Army<br>Jacksonville District, Corps of Engineers<br>Jacksonville, Florida | Scale: AS SHOWN<br>Drawing no.   |



MATCHLINE DWG. V-103 STA. 33+00 BAR CUT-3



**BAR CUT - 3**  
**ST. JOHNS RIVER**



NOTES:  
1. REFER TO SURVEY NO. 22-005.  
2. SEE SHEET NO.1 FOR SURVEY NOTES.

|  |                   |
|--|-------------------|
| <br>US Army Corps of Engineers<br>Jacksonville District<br>SAFETY ON THIS JOB<br>DEPENDS ON YOU  |                   |
| Project Name:<br>Drawing No.:<br>Date:   | Job No.:<br>Date: |
| DEPARTMENT OF THE ARMY<br>JACKSONVILLE DISTRICT, CORPS OF ENGINEERS<br>JACKSONVILLE, FLORIDA   |                   |
| <b>V-102</b><br>1Q HYDROGRAPHIC EXAM SURVEY FY221<br>14, 27, 35, 42 & 50 - FOOT PROJECT<br>HYDROGRAPHIC EXAM SURVEY<br>STA 0+00 TO STA 33+00 BAR CUT-3<br>PLAN |                   |
| Scale: AS SHOWN<br>Drawing no.   |                   |

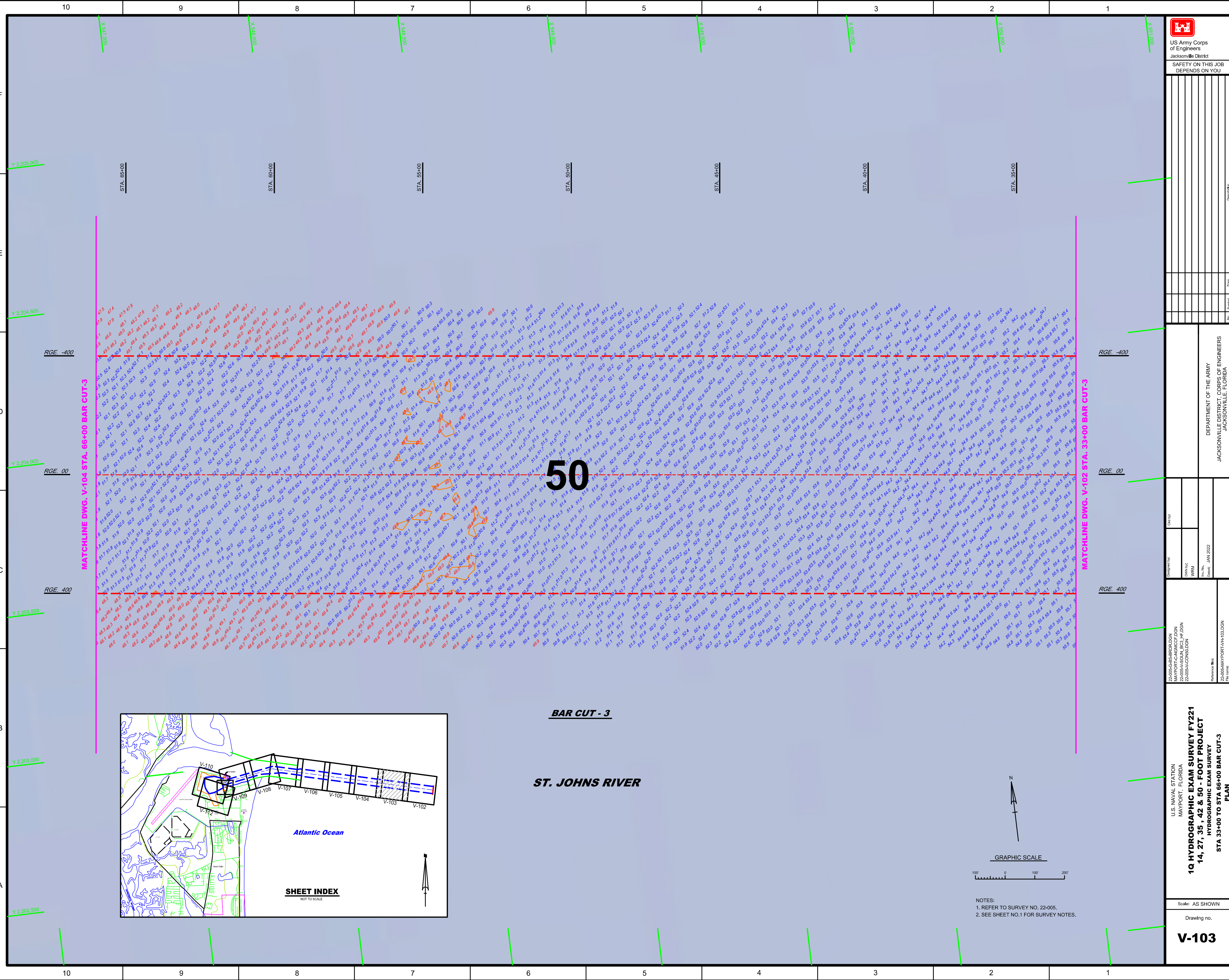
| NO. | SYMBOL | DESCRIPTION |
|-----|--------|-------------|
|     |        |             |
|     |        |             |
|     |        |             |
|     |        |             |
|     |        |             |
|     |        |             |
|     |        |             |
|     |        |             |
|     |        |             |
|     |        |             |
|     |        |             |

DEPARTMENT OF THE ARMY  
JACKSONVILLE DISTRICT, CORPS OF ENGINEERS  
JACKSONVILLE, FLORIDA

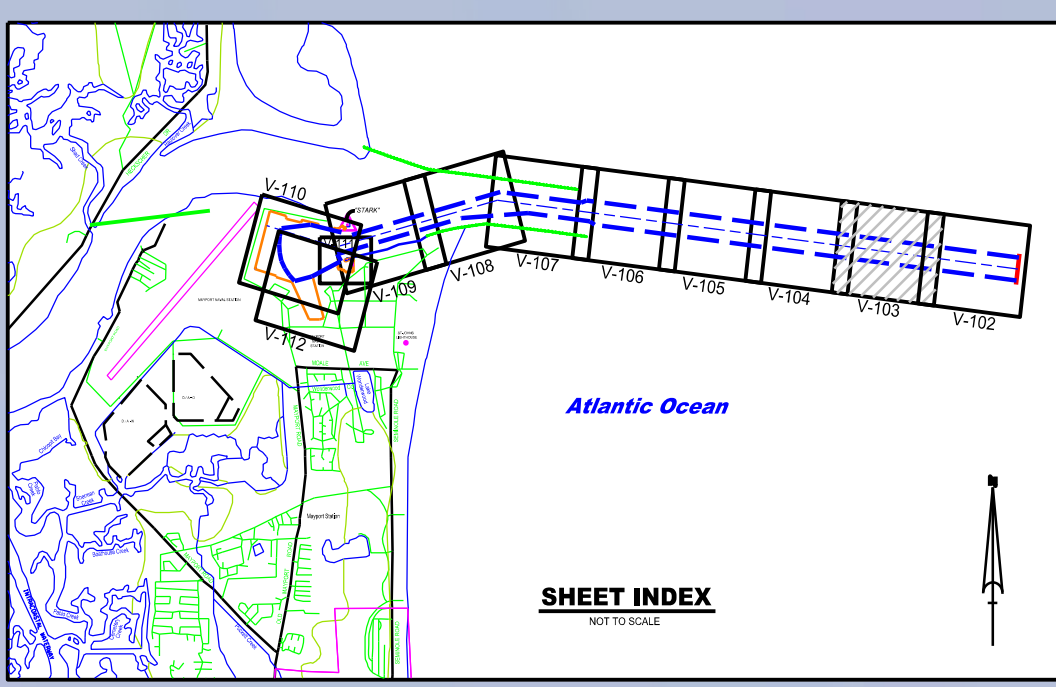
22-005-C-BS-BRIDLON  
MAYPORT-HIGHCREEK  
22-005-A-CONNOLOK  
22-005-A-PORTVAH-03LON

U.S. NAVAL STATION  
MAYPORT, FLORIDA  
**1Q HYDROGRAPHIC EXAM SURVEY FY221**  
**14, 27, 35, 42 & 50 - FOOT PROJECT**  
HYDROGRAPHIC EXAM SURVEY  
STA 33+00 TO STA 66+00 BAR CUT-3  
PLAN

Scale: AS SHOWN  
Drawing no.  
**V-103**



**50**



**BAR CUT - 3**  
**ST. JOHNS RIVER**

- NOTES:  
1. REFER TO SURVEY NO. 22-005.  
2. SEE SHEET NO.1 FOR SURVEY NOTES.



US Army Corps of Engineers  
Jacksonville District  
SAFETY ON THIS JOB  
DEPENDS ON YOU

DEPARTMENT OF THE ARMY  
JACKSONVILLE DISTRICT, CORPUS OF ENGINEERS  
JACKSONVILLE, FLORIDA

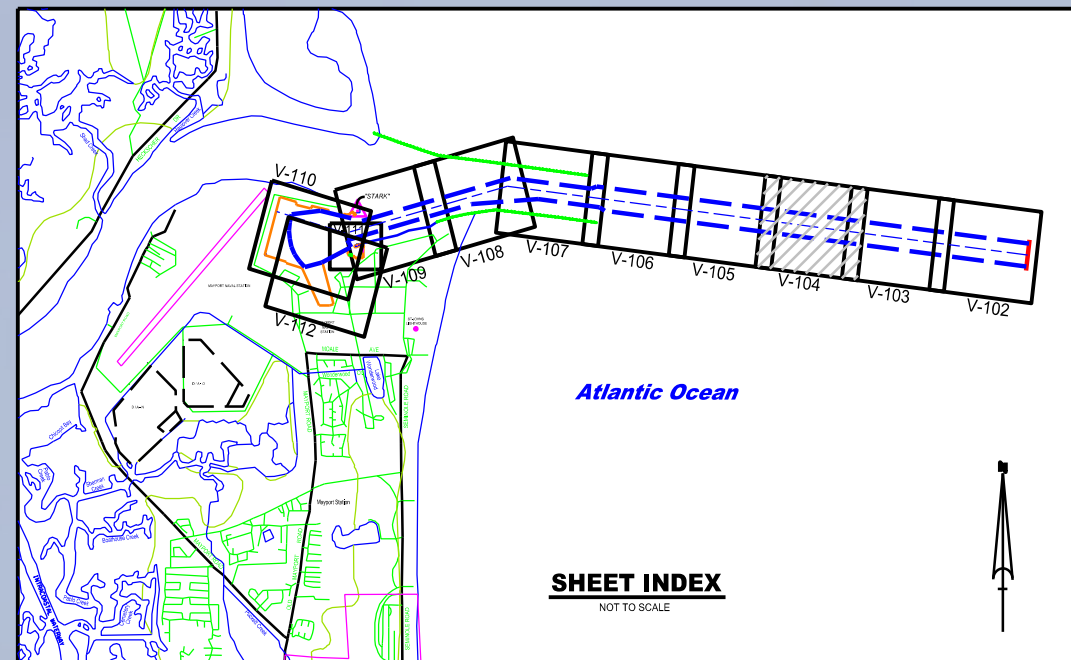
Designed by:  
Checked by:  
Drawn by:  
Reviewed by:  
Date: JAN 2022

U.S. NAVAL STATION  
MAYPORT, FLORIDA  
1Q HYDROGRAPHIC EXAM SURVEY FY221  
14, 27, 35, 42 & 50 - FOOT PROJECT  
HYDROGRAPHIC EXAM SURVEY  
STA 66+00 TO STA 99+00 BAR CUT-3  
PLAN

Scale: AS SHOWN

Drawing no.

V-104



**BAR CUT - 3**

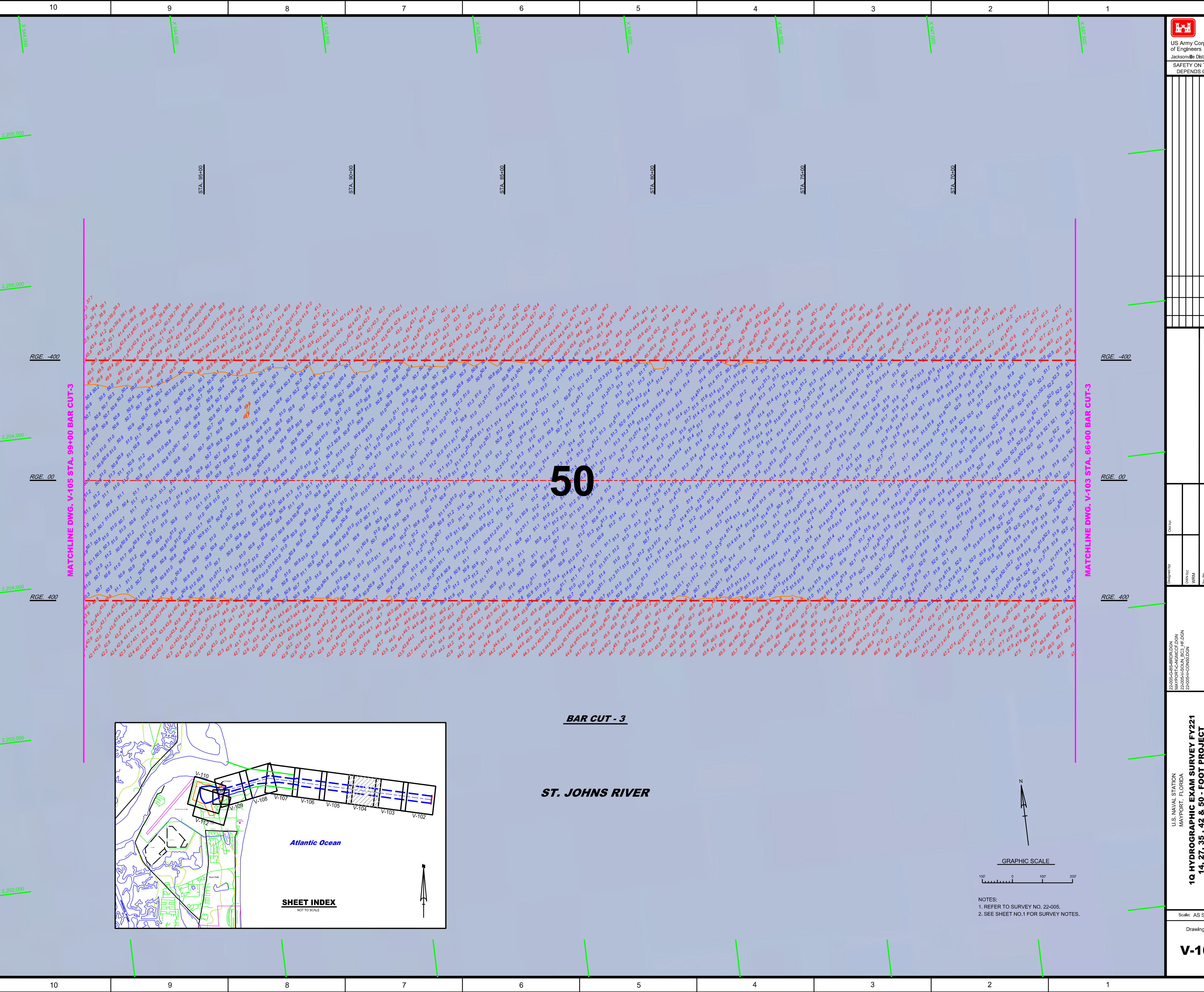
**ST. JOHNS RIVER**



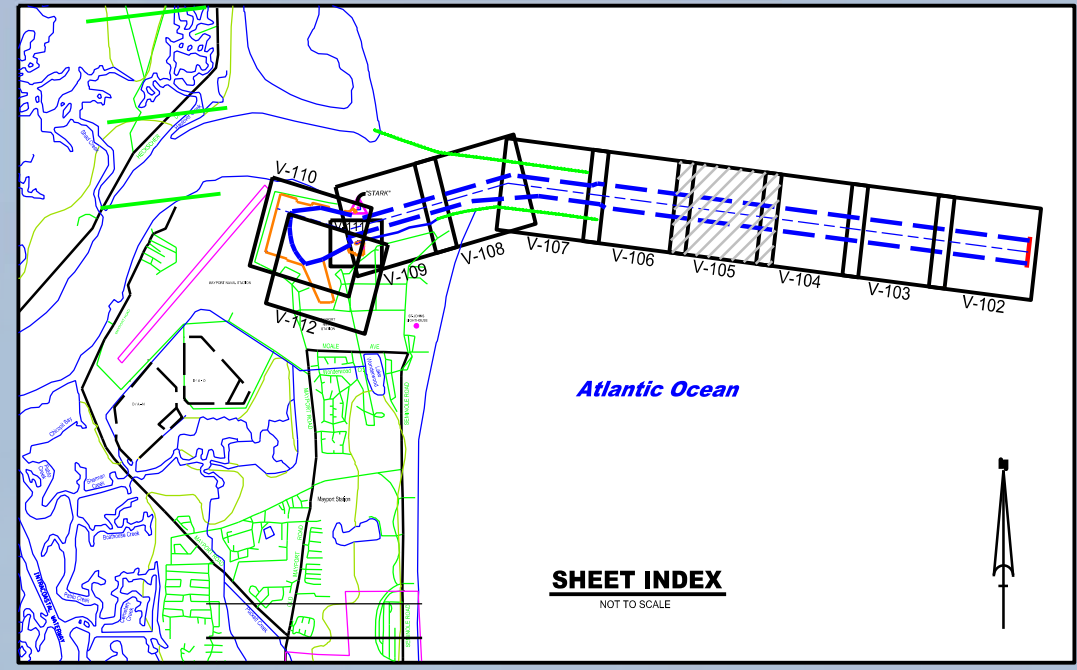
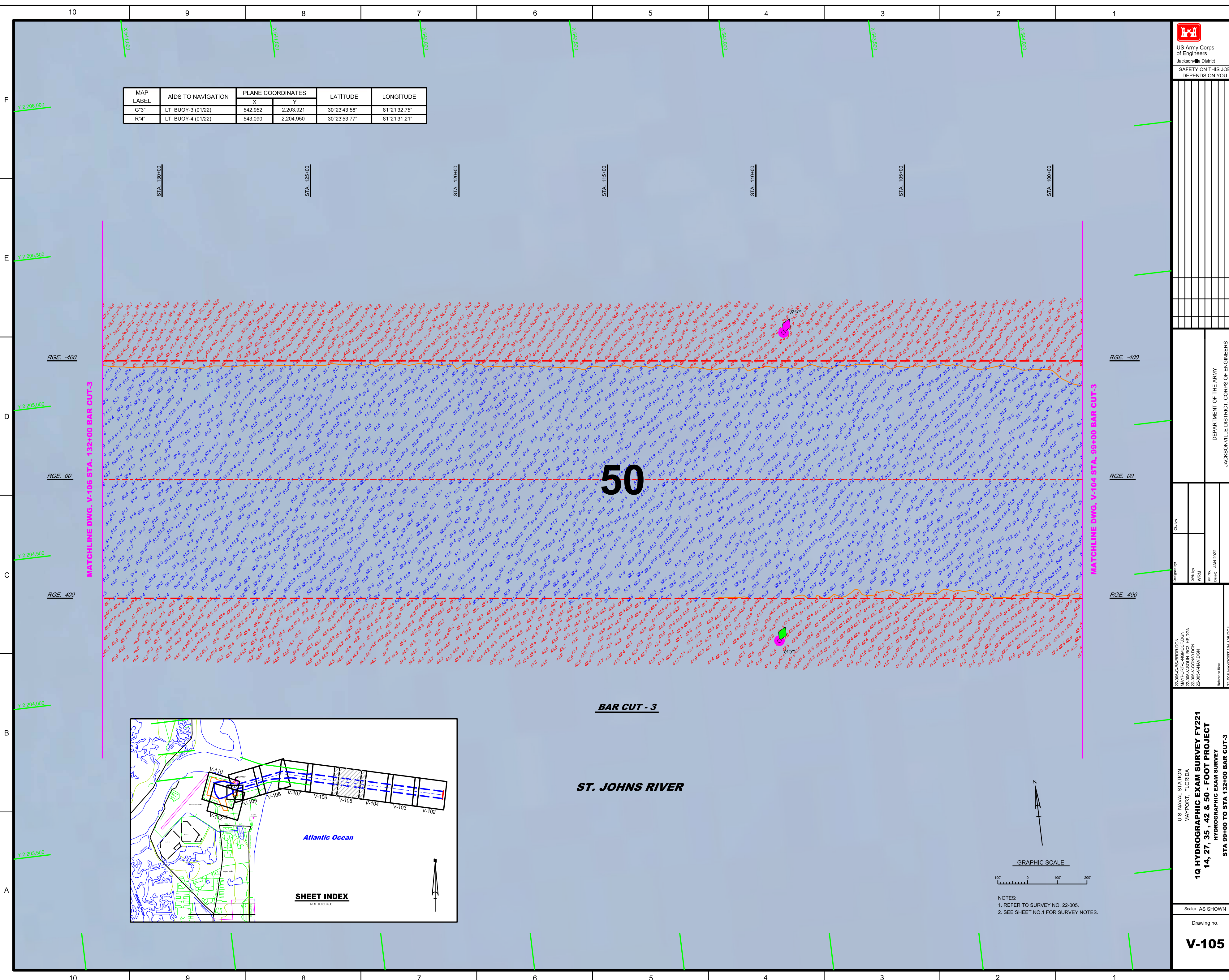
**GRAPHIC SCALE**



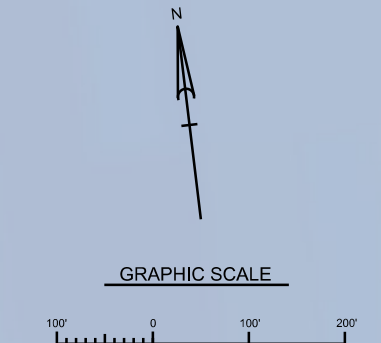
NOTES:  
1. REFER TO SURVEY NO. 22-005.  
2. SEE SHEET NO.1 FOR SURVEY NOTES.



| MAP LABEL | AIDS TO NAVIGATION | PLANE COORDINATES |           | LATITUDE     | LONGITUDE    |
|-----------|--------------------|-------------------|-----------|--------------|--------------|
|           |                    | X                 | Y         |              |              |
| G*3"      | LT. BUOY-3 (01/22) | 542,952           | 2,203,921 | 30°23'43.58" | 81°21'32.75" |
| R*4"      | LT. BUOY-4 (01/22) | 543,090           | 2,204,950 | 30°23'53.77" | 81°21'31.21" |



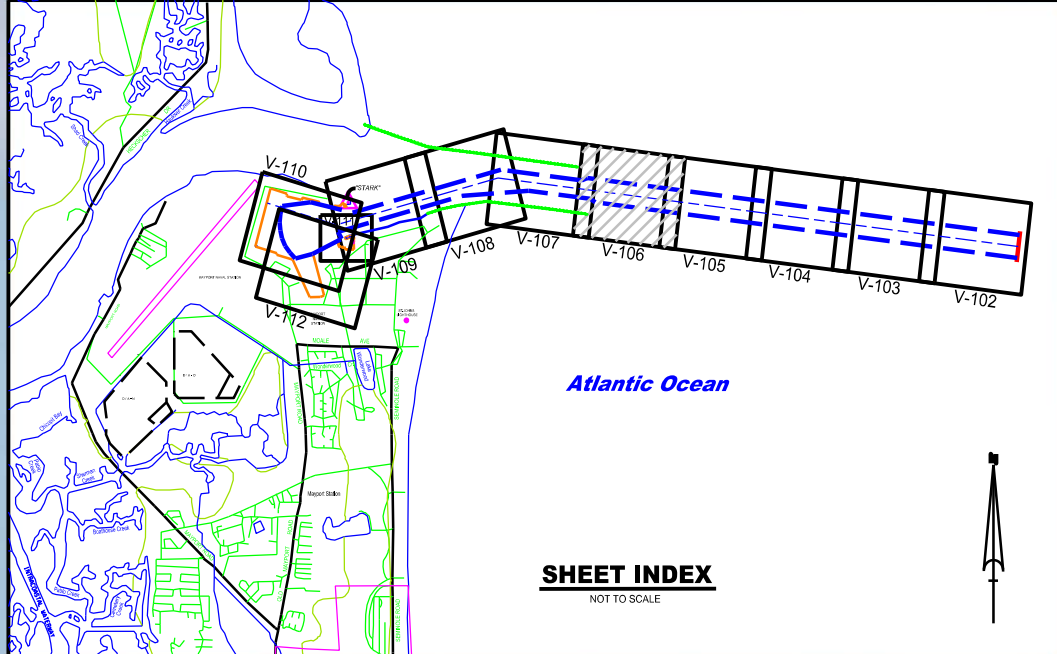
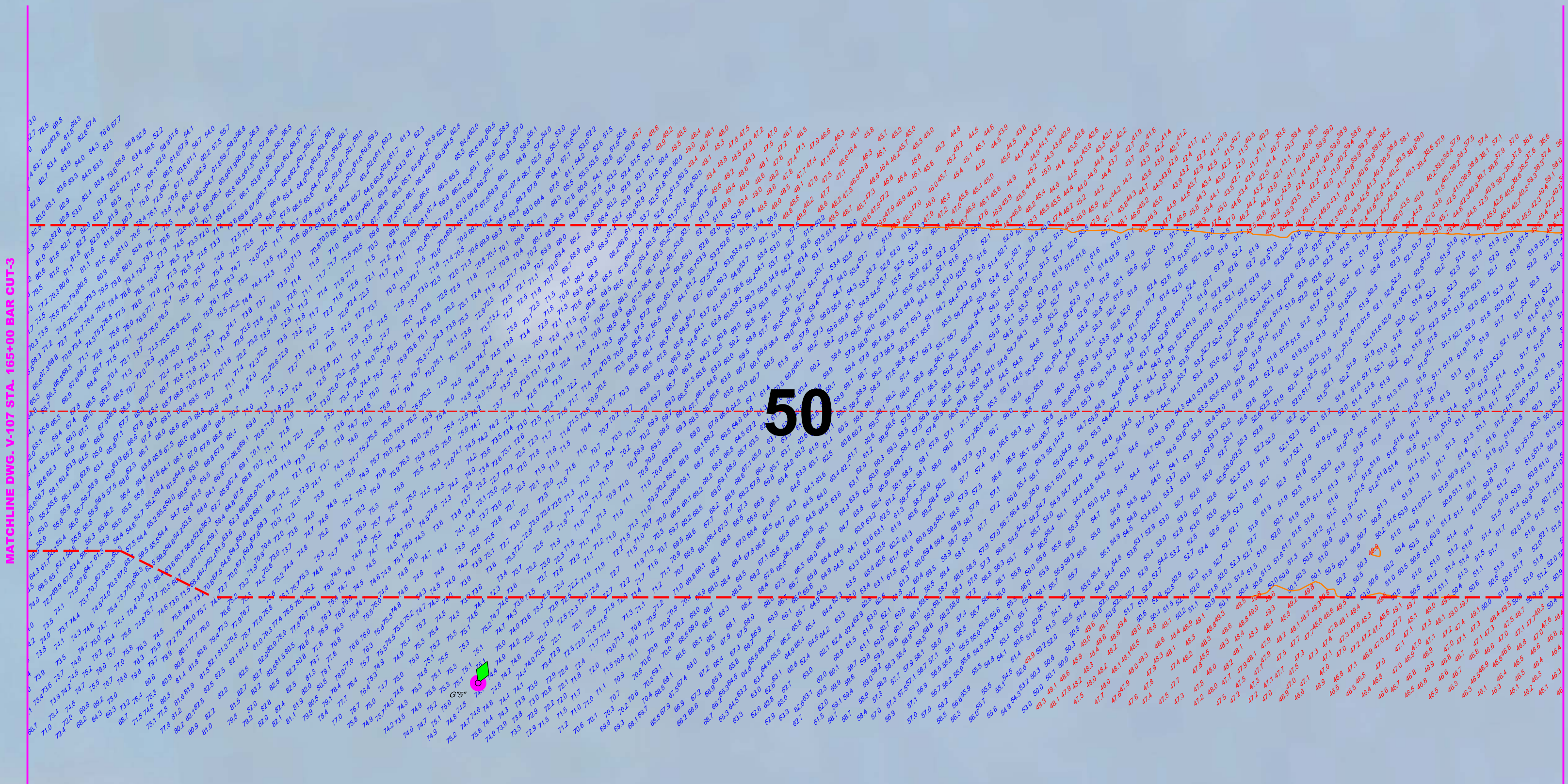
**BAR CUT - 3**  
**ST. JOHNS RIVER**



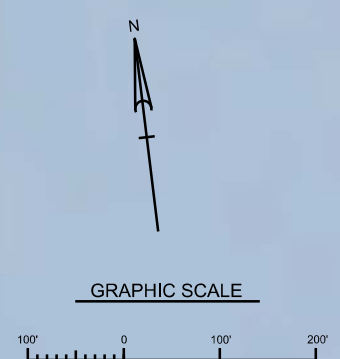
NOTES:  
1. REFER TO SURVEY NO. 22-005.  
2. SEE SHEET NO.1 FOR SURVEY NOTES.

| MAP LABEL | AIDS TO NAVIGATION | PLANE COORDINATES |           | LATITUDE     | LONGITUDE    |
|-----------|--------------------|-------------------|-----------|--------------|--------------|
|           |                    | X                 | Y         |              |              |
| G-5       | LT. BUOY-5 (01/22) | 538,369           | 2,204,434 | 30°23'48.50" | 81°22'25.10" |

STA. 165+00      STA. 155+00      STA. 145+00      STA. 140+00      STA. 135+00



**BAR CUT - 3**  
**ST. JOHNS RIVER**



NOTES:  
1. REFER TO SURVEY NO. 22-005.  
2. SEE SHEET NO.1 FOR SURVEY NOTES.

DEPARTMENT OF THE ARMY  
JACKSONVILLE DISTRICT, CORPS OF ENGINEERS  
JACKSONVILLE, FLORIDA

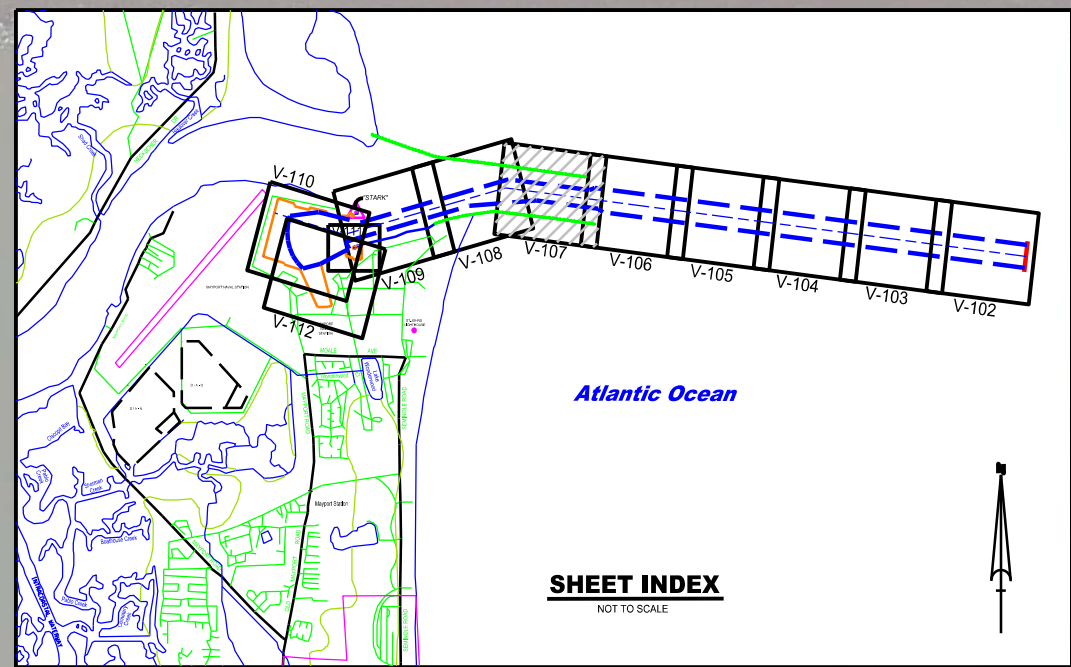
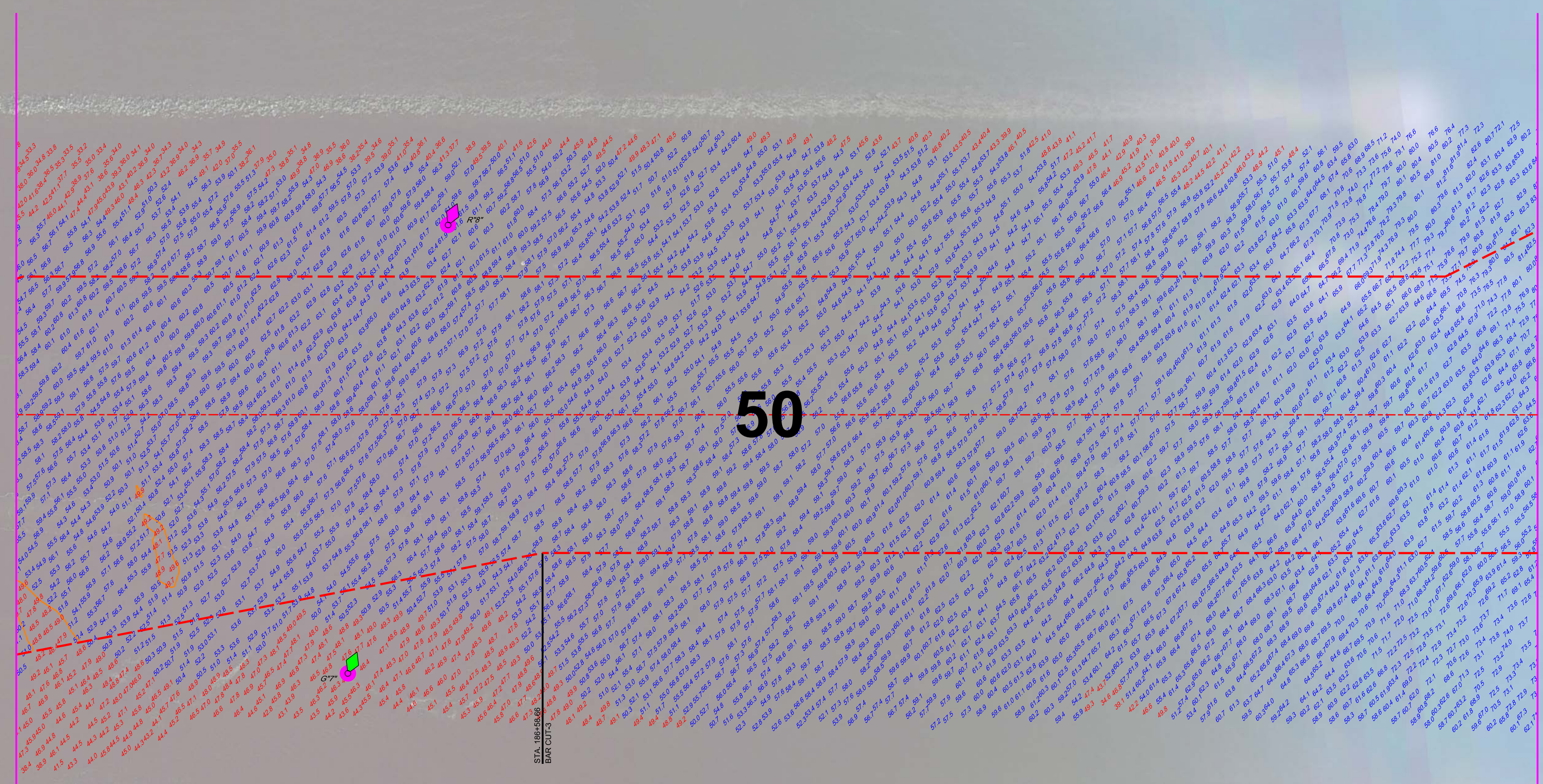
Designed by: [Name]  
Checked by: [Name]  
Date: JAN 2022

U.S. NAVAL STATION  
MAYPORT, FLORIDA  
22-005-CA-000-001  
22-005-CA-000-002  
22-005-CA-000-003

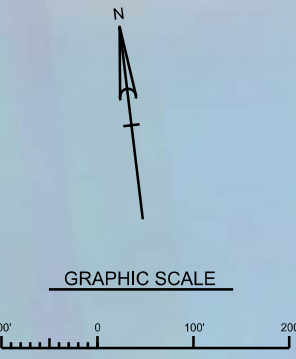
**1Q HYDROGRAPHIC EXAM SURVEY FY221**  
**14, 27, 35, 42 & 50 - FOOT PROJECT**  
HYDROGRAPHIC EXAM SURVEY  
STA 132+00 TO STA 165+00 BAR CUT-3  
PLAN

Scale: AS SHOWN  
Drawing no.  
**V-106**

| MAP LABEL | AIDS TO NAVIGATION | PLANE COORDINATES |           | LATITUDE     | LONGITUDE    |
|-----------|--------------------|-------------------|-----------|--------------|--------------|
|           |                    | X                 | Y         |              |              |
| G*7       | LT. BUOY-7 (01/22) | 534,848           | 2,204,882 | 30°23'52.82" | 81°23'05.32" |
| R*8       | LT. BUOY-8 (01/22) | 535,181           | 2,205,822 | 30°24'02.14" | 81°23'01.55" |



**BAR CUT - 3**  
**ST. JOHNS RIVER**



NOTES:  
1. REFER TO SURVEY NO. 22-005.  
2. SEE SHEET NO.1 FOR SURVEY NOTES.

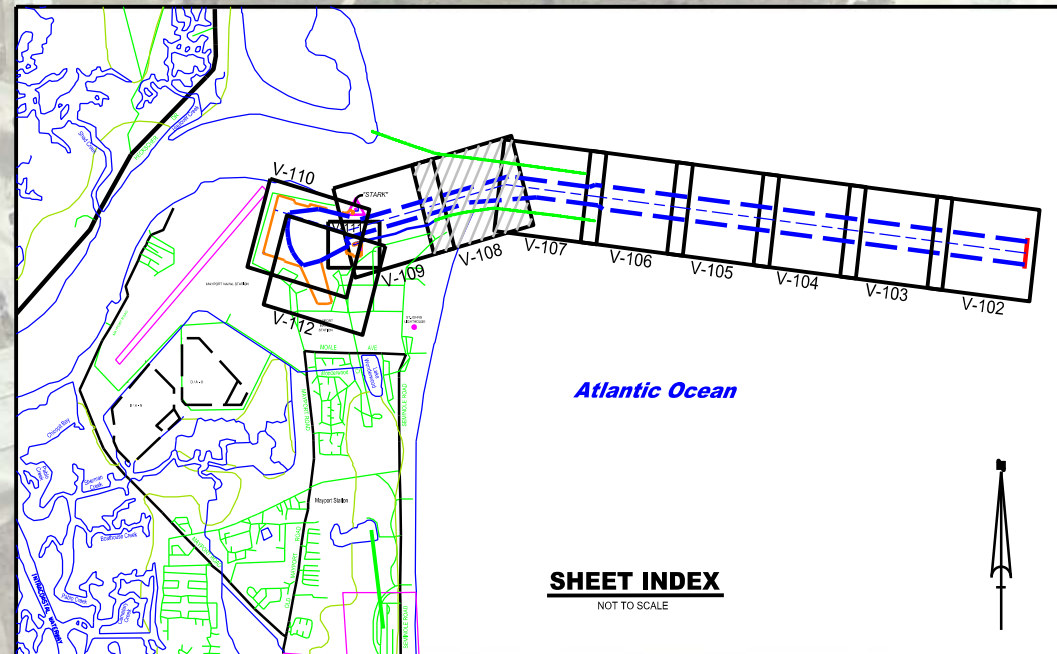
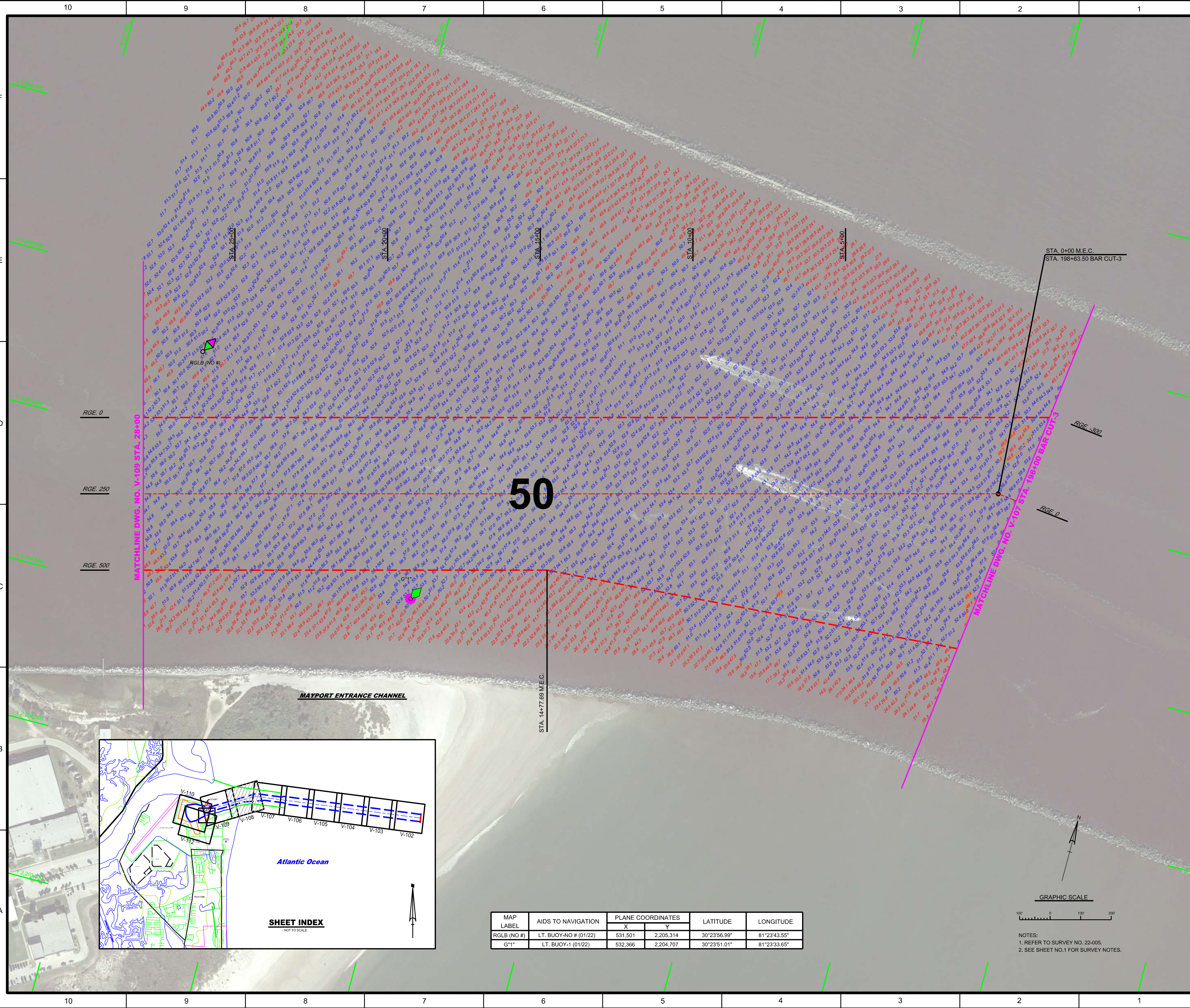
DEPARTMENT OF THE ARMY  
JACKSONVILLE DISTRICT, CORPS OF ENGINEERS  
JACKSONVILLE, FLORIDA

Drawn by: [Name]  
Checked by: [Name]  
Date: JAN 2022

U.S. NAVAL STATION  
MAYPORT, FLORIDA  
22-005-A-CON01.DGN  
22-005-A-CON02.DGN  
22-005-A-CON03.DGN  
22-005-A-CON04.DGN  
22-005-A-CON05.DGN  
22-005-A-CON06.DGN  
22-005-A-CON07.DGN  
22-005-A-CON08.DGN  
22-005-A-CON09.DGN  
22-005-A-CON10.DGN  
22-005-A-CON11.DGN  
22-005-A-CON12.DGN  
22-005-A-CON13.DGN  
22-005-A-CON14.DGN  
22-005-A-CON15.DGN  
22-005-A-CON16.DGN  
22-005-A-CON17.DGN  
22-005-A-CON18.DGN  
22-005-A-CON19.DGN  
22-005-A-CON20.DGN  
22-005-A-CON21.DGN  
22-005-A-CON22.DGN  
22-005-A-CON23.DGN  
22-005-A-CON24.DGN  
22-005-A-CON25.DGN  
22-005-A-CON26.DGN  
22-005-A-CON27.DGN  
22-005-A-CON28.DGN  
22-005-A-CON29.DGN  
22-005-A-CON30.DGN  
22-005-A-CON31.DGN  
22-005-A-CON32.DGN  
22-005-A-CON33.DGN  
22-005-A-CON34.DGN  
22-005-A-CON35.DGN  
22-005-A-CON36.DGN  
22-005-A-CON37.DGN  
22-005-A-CON38.DGN  
22-005-A-CON39.DGN  
22-005-A-CON40.DGN  
22-005-A-CON41.DGN  
22-005-A-CON42.DGN  
22-005-A-CON43.DGN  
22-005-A-CON44.DGN  
22-005-A-CON45.DGN  
22-005-A-CON46.DGN  
22-005-A-CON47.DGN  
22-005-A-CON48.DGN  
22-005-A-CON49.DGN  
22-005-A-CON50.DGN

**1Q HYDROGRAPHIC EXAM SURVEY FY221**  
**14, 27, 35, 42 & 50 - FOOT PROJECT**  
HYDROGRAPHIC EXAM SURVEY  
STA 165+00 TO STA 198+00 BAR CUT-3  
PLAN

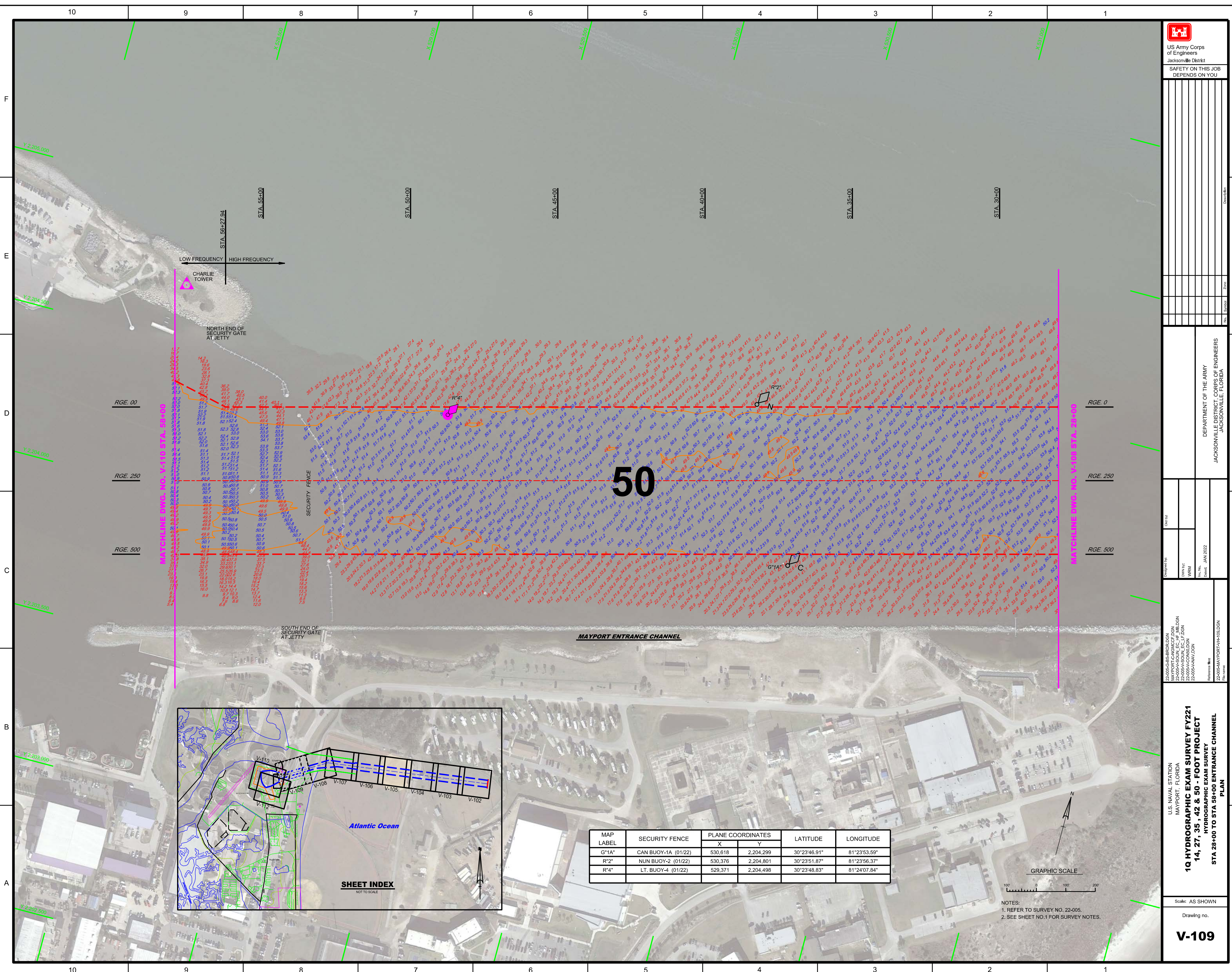
Scale: AS SHOWN  
Drawing no.  
**V-107**



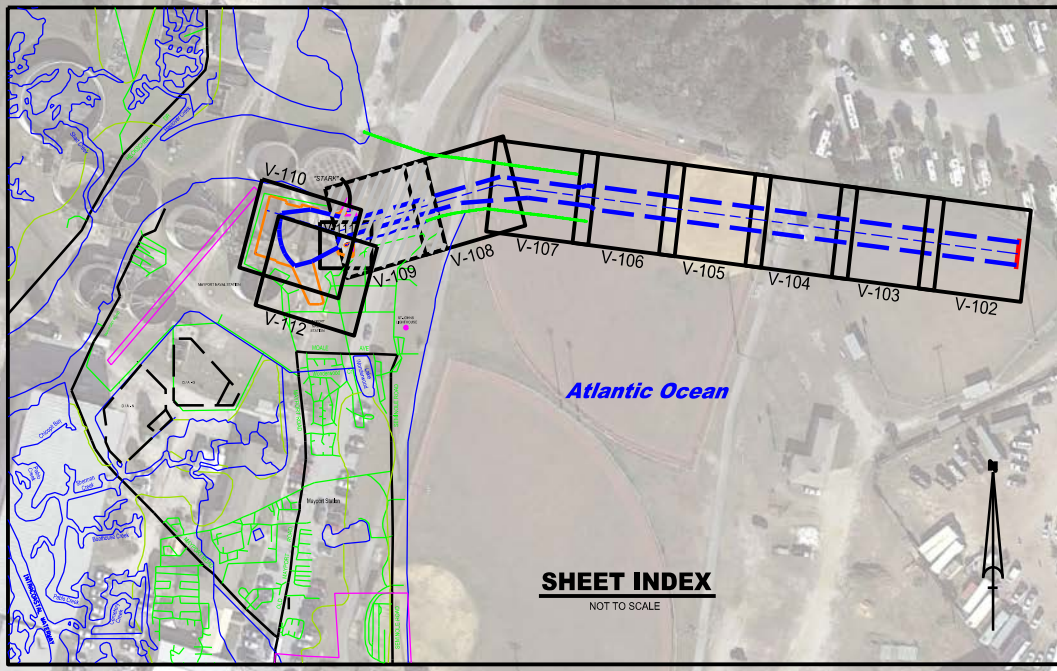
| MAP LABEL   | AIDS TO NAVIGATION    | PLANE COORDINATES |           | LATITUDE     | LONGITUDE    |
|-------------|-----------------------|-------------------|-----------|--------------|--------------|
|             |                       | X                 | Y         |              |              |
| RGLB (NO #) | LT. BUOY-NO # (01/22) | 531,501           | 2,205,314 | 30°23'56.99" | 81°23'43.55" |
| G*1"        | LT. BUOY-1 (01/22)    | 532,366           | 2,204,707 | 30°23'51.01" | 81°23'33.65" |

NOTES:  
1. REFER TO SURVEY NO. 22-005.  
2. SEE SHEET NO.1 FOR SURVEY NOTES.





| MAP LABEL | SECURITY FENCE      | PLANE COORDINATES |           | LATITUDE     | LONGITUDE    |
|-----------|---------------------|-------------------|-----------|--------------|--------------|
|           |                     | X                 | Y         |              |              |
| G*1A      | CAN BUOY-1A (01/22) | 530,618           | 2,204,299 | 30°23'46.91" | 81°23'53.59" |
| R*2       | NUN BUOY-2 (01/22)  | 530,376           | 2,204,801 | 30°23'51.87" | 81°23'56.37" |
| R*4       | LT. BUOY-4 (01/22)  | 529,371           | 2,204,498 | 30°23'48.83" | 81°24'07.84" |



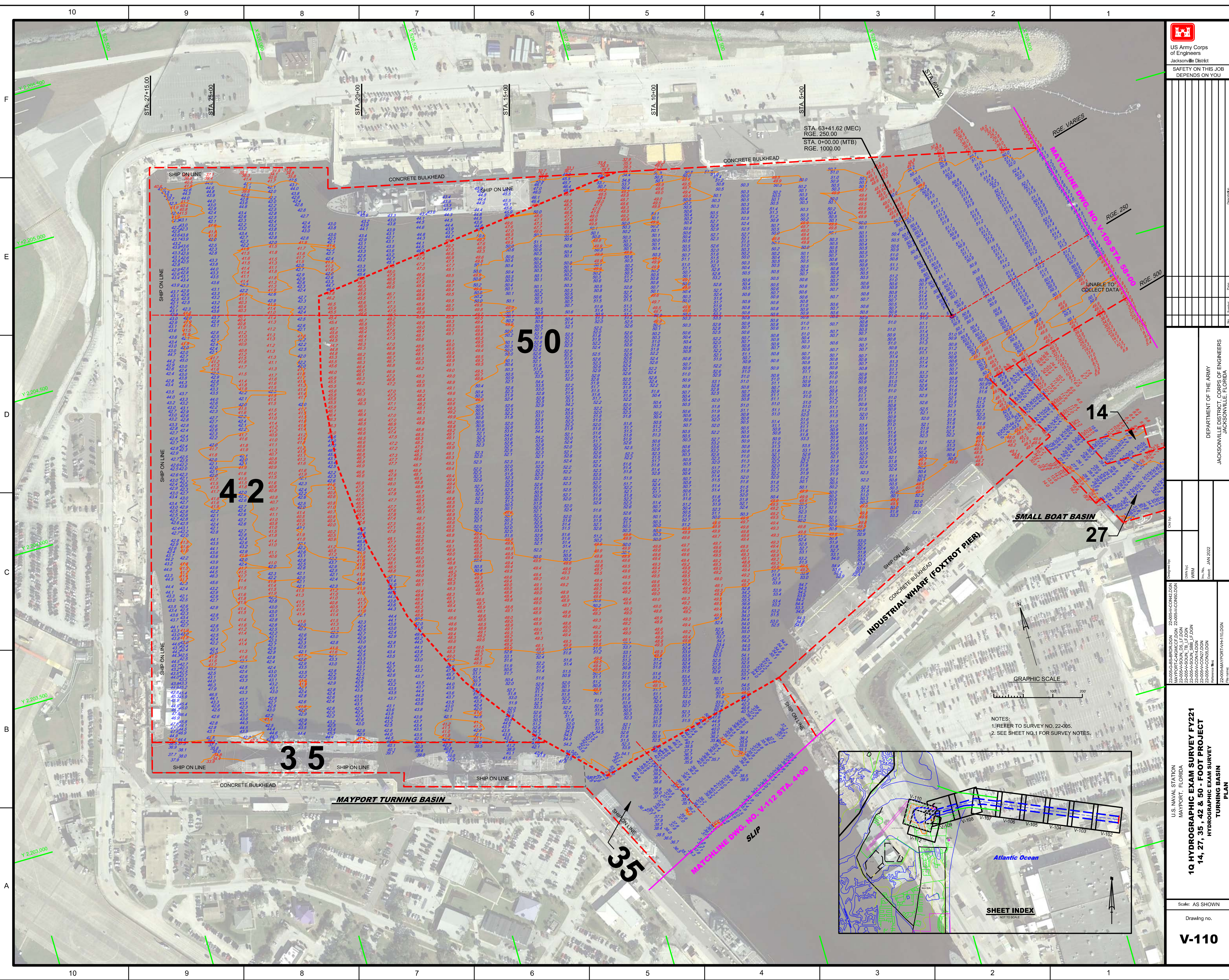
U.S. NAVAL STATION  
 MAYPORT, FLORIDA  
**1Q HYDROGRAPHIC EXAM SURVEY FY21**  
 14, 27, 35, 42 & 50 - FOOT PROJECT  
 HYDROGRAPHIC EXAM SURVEY  
 STA 28+00 TO STA 58+00 ENTRANCE CHANNEL  
 PLAN

Scale: AS SHOWN  
 Drawing no.  
**V-109**

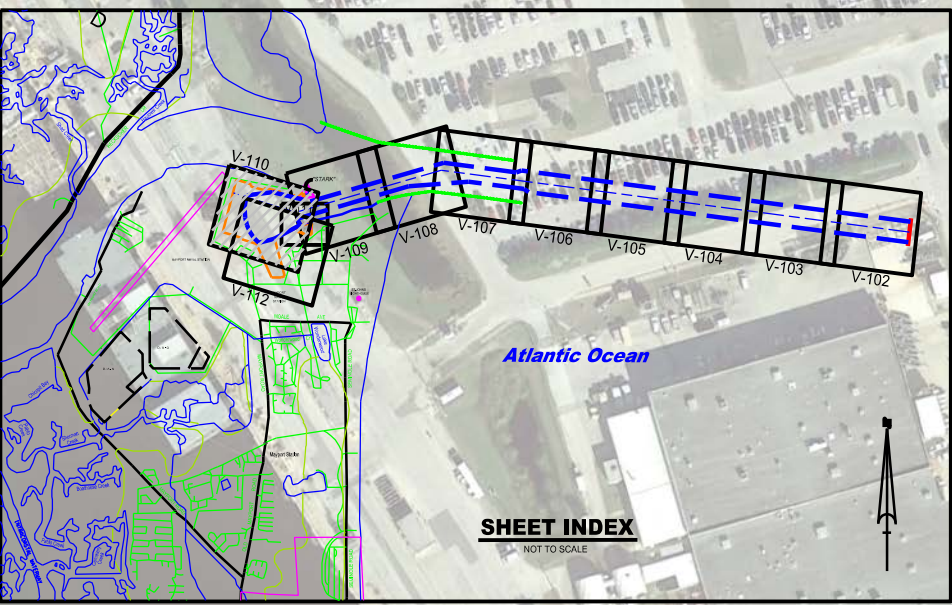
DESIGNED BY: 22-005-GS-BROLDEN  
 CHECKED BY: 22-005-CH-ROLDEN  
 DRAWN BY: 22-005-A-SQUIL  
 DATE: JAN 2022

DEPARTMENT OF THE ARMY  
 JACKSONVILLE DISTRICT, CORPS OF ENGINEERS  
 JACKSONVILLE, FLORIDA

NOTES:  
 1. REFER TO SURVEY NO. 22-005.  
 2. SEE SHEET NO. 1 FOR SURVEY NOTES.



- NOTES:
- 1. REFER TO SURVEY NO. 22-005.
  - 2. SEE SHEET NO.1 FOR SURVEY NOTES.



|                                    |                                   |                  |                 |               |
|------------------------------------|-----------------------------------|------------------|-----------------|---------------|
| DESIGNED BY<br>22-005-ACONCELD/CDN | CHECKED BY<br>22-005-ACONCELD/CDN | DATE<br>JAN 2022 | DRAWN BY<br>WRM | DATE          |
|                                    |                                   |                  |                 | SCALE         |
|                                    |                                   |                  |                 | PROJECT       |
|                                    |                                   |                  |                 | NO. OF SHEETS |
| PROJECT                            | NO. OF SHEETS                     | PROJECT          |                 | NO. OF SHEETS |
| PROJECT                            |                                   | PROJECT          |                 | NO. OF SHEETS |

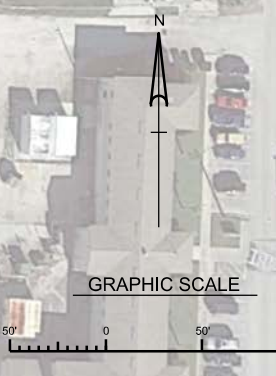
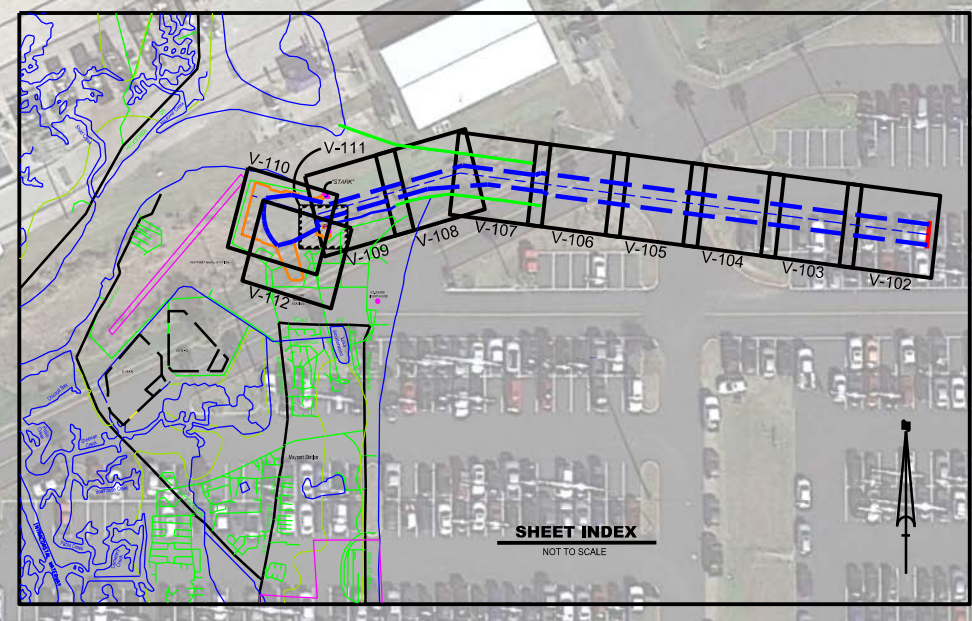
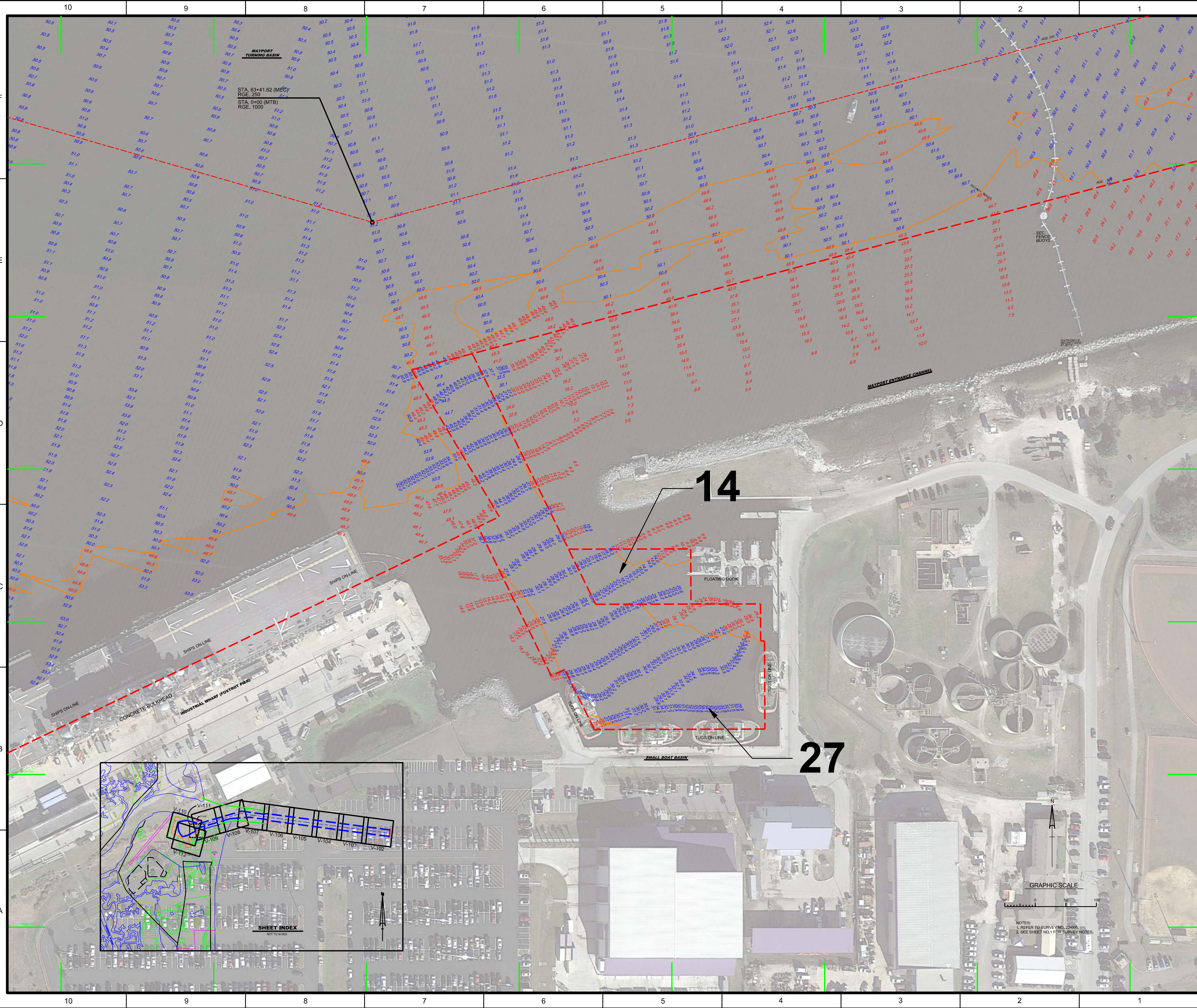
|  |                     |
|--|---------------------|
| U.S. NAVAL STATION<br>MAYPORT, FLORIDA | 22-005-ACONCELD/CDN |
| 22-005-ACONCELD/CDN                    | 22-005-ACONCELD/CDN |
| 22-005-ACONCELD/CDN                    | 22-005-ACONCELD/CDN |
| 22-005-ACONCELD/CDN                    | 22-005-ACONCELD/CDN |
| 22-005-ACONCELD/CDN                    | 22-005-ACONCELD/CDN |
| 22-005-ACONCELD/CDN                    | 22-005-ACONCELD/CDN |
| 22-005-ACONCELD/CDN                    | 22-005-ACONCELD/CDN |

|  |                     |
|--|---------------------|
| U.S. NAVAL STATION<br>MAYPORT, FLORIDA | 22-005-ACONCELD/CDN |
| 22-005-ACONCELD/CDN                    | 22-005-ACONCELD/CDN |
| 22-005-ACONCELD/CDN                    | 22-005-ACONCELD/CDN |
| 22-005-ACONCELD/CDN                    | 22-005-ACONCELD/CDN |
| 22-005-ACONCELD/CDN                    | 22-005-ACONCELD/CDN |
| 22-005-ACONCELD/CDN                    | 22-005-ACONCELD/CDN |

|  |                     |
|--|---------------------|
| U.S. NAVAL STATION<br>MAYPORT, FLORIDA | 22-005-ACONCELD/CDN |
| 22-005-ACONCELD/CDN                    | 22-005-ACONCELD/CDN |
| 22-005-ACONCELD/CDN                    | 22-005-ACONCELD/CDN |
| 22-005-ACONCELD/CDN                    | 22-005-ACONCELD/CDN |
| 22-005-ACONCELD/CDN                    | 22-005-ACONCELD/CDN |
| 22-005-ACONCELD/CDN                    | 22-005-ACONCELD/CDN |



NOTES:  
1. REFER TO SURVEY NO. 22-005-ACON01 THROUGH 22-005-ACON100 FOR SURVEY NOTES.  
2. SEE SHEET NO. 1 FOR SURVEY NOTES.

50

35

35

MAYPORT TURNING BASIN

INDUSTRIAL WHARF  
(FOXTROT PIER)

SMALL BOAT BASIN

STA. 5+00 D.S.

SHIP ON LINE

SLIP

STA. 10+00 D.S.

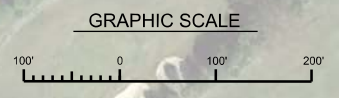
RGE. 23.0

SHIP ON LINE

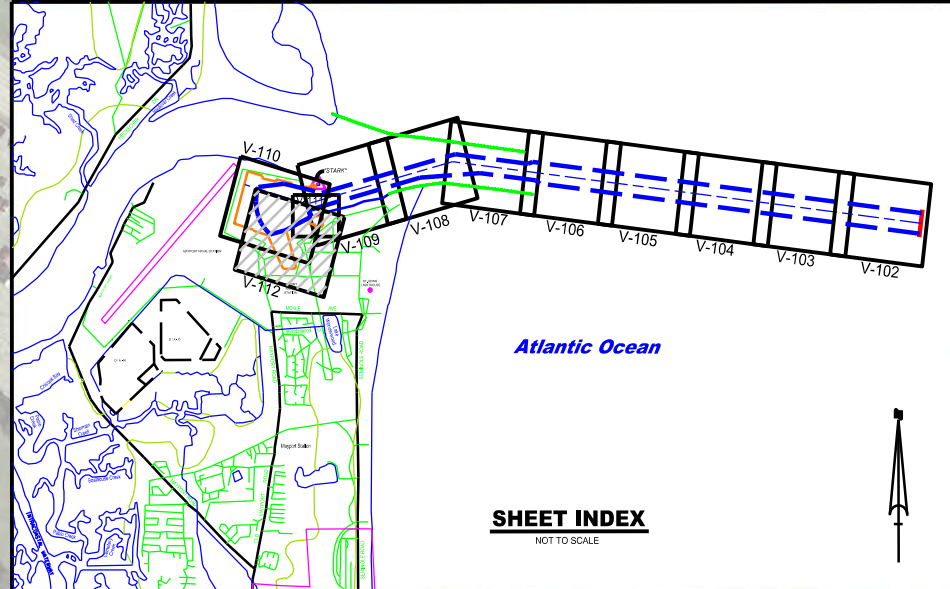
STA. 15+46.3 D.S.  
RGE. 250

STA. 16+12 D.S.  
RGE. 363.7

STA. 16+31.3 D.S.  
RGE. 490.4



NOTES:  
 1. REFER TO SURVEY NO. 22-005.  
 2. SEE SHEET NO.1 FOR SURVEY NOTES.



DEPARTMENT OF THE ARMY  
 JACKSONVILLE DISTRICT, CORPS OF ENGINEERS  
 JACKSONVILLE, FLORIDA

U.S. NAVAL STATION  
 MAYPORT, FLORIDA

1Q HYDROGRAPHIC EXAM SURVEY FY221  
 14, 27, 35, 42 & 50 - FOOT PROJECT  
 HYDROGRAPHIC EXAM SURVEY  
 DESTROYER SLIP  
 PLAN

Scale: AS SHOWN  
 Drawing no.  
**V-112**